



OPTIMSCAN

3M / 5M

High End Industry Inspection

features OptimScan 3M

SHINING 3D OptimScan-3M 3D scanner is the standard 3D scanner released by SHINING 3D. Equipped with 3.0 mega pixels cameras and latest blue light scanning technology, it has wide application due its excellent performance.

features OptimScan 5M

SHINING 3D OptimScan-5M 3D scanner is the latest blue light 3D scanner in the market, featuring high-end outlook, structure, component and configuration. Its 5.0 mega pixel cameras and blue light scanning technology bring users amazing scanning speed and accuracy, suitable for high-end application like defense, aerospace, mould industry, etc.

Values of CAV full dimension inspection



Minimize the Error Difference and Save the Time to the Utmost

This solution avoids manual error by carrying out CAD data inspection directly, which improves the inspection process efficiency.



Dramatic Production Efficiency Improvement

Professional inspection software could record all the steps and parameters. Batch inspection is as easy as single case inspection, because software could repeat the inspection procedure automatically. User can simply press one key to do one case or multi-case inspection job.



Smart Inspection

User can modify any step of the inspection process and the software shall update all related steps automatically. User has the right to modify till getting the best inspection result.

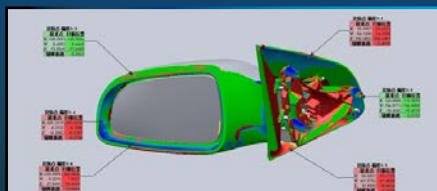


High Accuracy

Repeatability is an important part of quality control process. Shining 3D full dimension inspection solution could help user realize this repeatability easily. Its automation also minimizes the error difference from user to user.



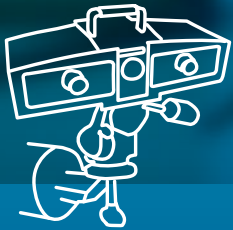
Reverse Engineering



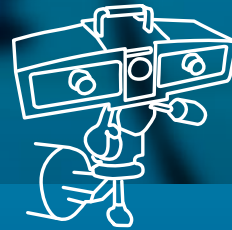
3D Inspection



3D Printing



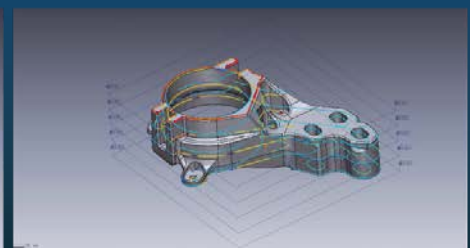
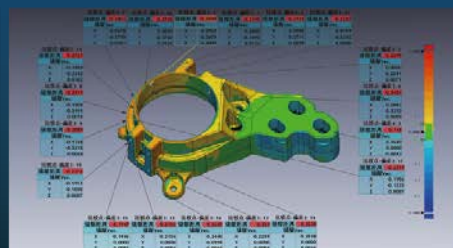
technical specifications
OptimScan 3M



technical specifications
OptimScan 5M

Single shot accuracy	0.007 - 0.025 mm
Volumen accuracy	0.1 mm/m
Single scan speed	< 2 s
Point distance	0.048 - 0.192 mm
Single scan range	100x75 mm 200x150 mm 400x300 mm
Scan depth	100-400 mm
Camera resolution	3.0 MPx2
Light source	Blue light (LED)
Scan type	Non-contact structure light scanning
Alignment	Reference points auto-alignment / manual alignment
Output data format	ASC,STL,PLY,RGE,P3,PF
OS system support	Win10 64 bits
Operation temperature	0 - 45 °C

Single shot accuracy	0.005 - 0.015 mm
Volumen accuracy	0.08 mm/m
Single scan speed	< 1.5 s
Point distance	0.04 - 0.16 mm
Single scan range	100x75 mm 200x150 mm 400x300 mm
Scan depth	100-400 mm
Camera resolution	5.0 MPx2
Light source	Blue light (LED)
Scan type	Non-contact structure light scanning
Alignment	Reference points auto-alignment / manual alignment
Output data format	ASC,STL,PLY,RGE,P3,PF
OS system support	Win10 64 bits
Operation temperature	0 - 45 °C



DISCOVERY
3Dprinter
www.discovery3dprinter.com

CNCbárcenas
www.cncbarcnas.com

INDUSTRIAL STANDARD
CLASSIFICATION CODE 08-A-284-13020079

WE ARE OFFICIAL RESELLERS
FOR METROLOGY SCANNERS
FROM SHINING 3D

Pol. Industrial Entrecaminos. Avda. de Holanda, 42
13300 Valdepeñas (Ciudad Real) Tel. 926 64 89 85 - 926 31 00 90
info@cncbarcnas.com · info@discovery3dprinter.com